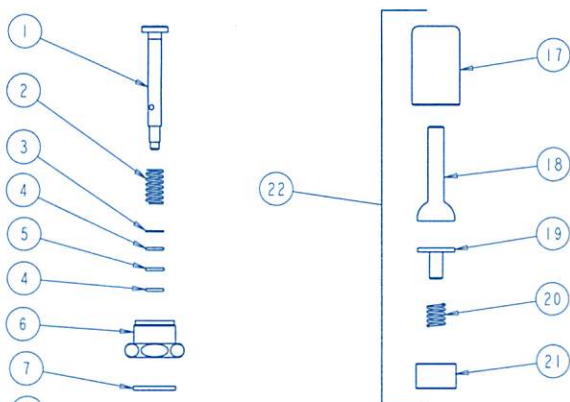


How to Repair a "NAIAD" Cartridge with Dashpot and Oscillating Handle

1. To uncover operating cartridge on urinal valves with non-sag handles, unscrew bonnet (386-010) and remove entire assembly (386-010K), on self-closing stops as shown on right hand drawing, first loosen and remove bonnet and oscillating lever by unscrewing bonnet with wrench.
2. Either cartridge can now be removed from body by loosening cap (618-001) with a flat wrench and lifting entire cartridge from body including the dashpot.
3. If leakage is occurring through spout outlet, insert 1/8" diameter pin or pin wrench (244-025) through hole in stem and with crescent wrench remove stem nut (333-097) and all parts up to and including (1-027) seat. Inspect seat washer (244-006) and replace if necessary, next inspect seat (1-027) for nicks or water cutting and replace if necessary. If cup washer (333-040) has been sticking in dashpot, replace also.
4. If cartridge has been leaking between oscillating lever and upper cap, remove stem assembly (386-008K) and spring (395-018) from sleeve (386-014) and cap (618-001) by taking out washer (319-012) from cap, take out packing arrangement which consists of (2) o-rings (319-140) with (1) leather washer (319-035) between o-rings. Grease stem lightly around packing area and put new o-rings and packing on stem using same arrangement as indicated, also lubricate O,D. of packing.
5. Place stem with spring, washer, and packing properly assembled back into cap and sleeve. Now assembly lower cartridge parts in proper relation and insert pin or pin wrench (244-025) in stem hole again and tighten nut (333-097).
6. We recommend removing and replacing (1-043) gasket before cartridge is placed in valve body. Place cartridge in body and lock cartridge by tightening cap (618-001) securely, add upper cap and oscillating lever sub-assembly to cartridge.

NOTE:
Fittings using (333-073K) dashpot, follow procedures on page 10 for adjustments.

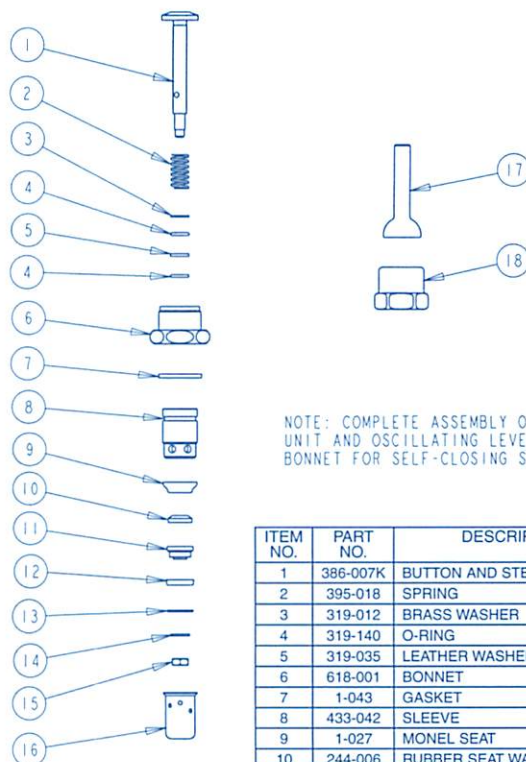
386 XSLO



NOTE: COMPLETE ASSEMBLY OF 386X-SLO UNIT AND 386-010K OSCILLATING LEVER HANDLE ASSEMBLY FOR URINAL VALVES.

| ITEM NO. | PART NO. | DESCRIPTION |
|----------|----------|--------------------------|
| 1 | 386-008K | BUTTON AND STEM ASSEMBLY |
| 2 | 395-018 | SPRING |
| 3 | 319-012 | BRASS WASHER |
| 4 | 319-140 | O-RING |
| 5 | 319-035 | LEATHER WASHER |
| 6 | 618-001 | BONNET |
| 7 | 1-043 | GASKET |
| 8 | 433-042 | SLEEVE |
| 9 | 1-027 | MONEL SEAT |
| 10 | 244-006 | RUBBER SEAT WASHER |
| 11 | 333-026 | RETAINER |
| 12 | 333-040 | RUBBER WASHER |
| 13 | 333-039 | WASHER |
| 14 | 1-031 | STEM WASHER |
| 15 | 333-097 | STEM NUT |
| 16 | 333-073K | SLOW DASHPOT ASSEMBLY |
| 17 | 386-010 | BONNET |
| 18 | 386-009 | BALL HANDLE |
| 19 | 386-011 | PLUNGER |
| 20 | 386-013 | SPRING |
| 21 | 386-014 | SLEEVE |
| 22 | 386-010K | HANDLE ASSEMBLY |

386 X



NOTE: COMPLETE ASSEMBLY OF 386X UNIT AND OSCILLATING LEVER AND BONNET FOR SELF-CLOSING STOPS.

| ITEM NO. | PART NO. | DESCRIPTION |
|----------|----------|--------------------------|
| 1 | 386-007K | BUTTON AND STEM ASSEMBLY |
| 2 | 395-018 | SPRING |
| 3 | 319-012 | BRASS WASHER |
| 4 | 319-140 | O-RING |
| 5 | 319-035 | LEATHER WASHER |
| 6 | 618-001 | BONNET |
| 7 | 1-043 | GASKET |
| 8 | 433-042 | SLEEVE |
| 9 | 1-027 | MONEL SEAT |
| 10 | 244-006 | RUBBER SEAT WASHER |
| 11 | 333-026 | RETAINER |
| 12 | 333-040 | RUBBER WASHER |
| 13 | 333-039 | WASHER |
| 14 | 1-031 | STEM WASHER |
| 15 | 333-097 | STEM NUT |
| 16 | 333-075 | DASHPOT |
| 17 | 386-009 | BALL HANDLE |
| 18 | 386-005 | BONNET |