



4515 East 139th Street
 Grandview, MO 64030
 800-362-9055
 Fax 800-362-1463
 www.PRIER.com

C-634 Heavy Commercial Wall Hydrant



- **Commercial/Industrial**
- **Freezeless**
- **Anti-Siphon**
- **Backflow Check Valve**
- **Self Draining**
- **Quick Open / Close**



Application

The Prier C-634 provides a year round source of water to areas of structures that are subject to freezing temperatures. The hydrant valve is connected to the supply piping in the heated portion of the structure, eliminating the possibility of freezing. To assure freeze protection, the hydrant will drain even with the hose attached and under pressure.

The integral vacuum breaker/backflow preventor provides protection against cross-connection with the potable water system, utilizing a check valve to prevent back pressure and a vacuum breaker to vent in the case of siphonage. A removable operating key is provided to prevent unauthorized usage of the hydrant. No special installation tools are required.

Features

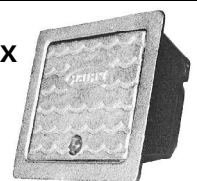
- High Flow Rate, independent 3rd Party tested to flow 19 Gallons per Minute at 25 PSI differential.
- Heavy Pattern cast brass hydrant for use with or without Brass or Satin Nickel Box
- Satin Nickel Plated Body retains original finish for years
- Heavy duty brass piping, significantly stronger than ordinary copper tubing, with threaded and sealed joints
- Simple, solderless design and Solid Non-Ferrous operating rod for long wear life
- Patented Prier "Triple Seal" positive shutoff system offers triple redundancy to assure shutoff
- Patented Prier quick opening and modulating design require less force and fewer turns to operate
- Both 3/4" and 1" Hose Threads meet ASSE 1019 or ASSE 1052 & CSA B64.2 standards, listed at ASSE, CSA and IAPMO
- Vacuum Breaker operates at lower differential and features self cleaning design to prevent clogging
- Multiple vent holes ensure proper draining and reduce problems associated with insect nesting
- Design enables valve to be easy secured to any type of inner wall, utilizing provided clamping ring
- Single hole design assists in installation, the product is ideal for tilt-up construction, stone fronts or metal buildings.

Ordering



Wall Hydrant Only

Optional Hydrant Box



C-634N12- _____

Options
 1052-ASSE 1052 Approved
 Double Check

C-634BX1

Hose Thread Outlet
 4-3/4" Garden Hose
 6-1" Hose

Inlet
 N-1" MPT x 3/4" FPT
 P-1" Male SWT x 3/4" Female SWT

Length
 CC-Close Coupled
 04-4" Insertion
 06-6" Insertion
 08-8" Insertion
 10-10" Insertion
 12-12" Insertion
 14-14" Insertion
 18-18" Insertion
 24-24" Insertion
 XX-Special Size

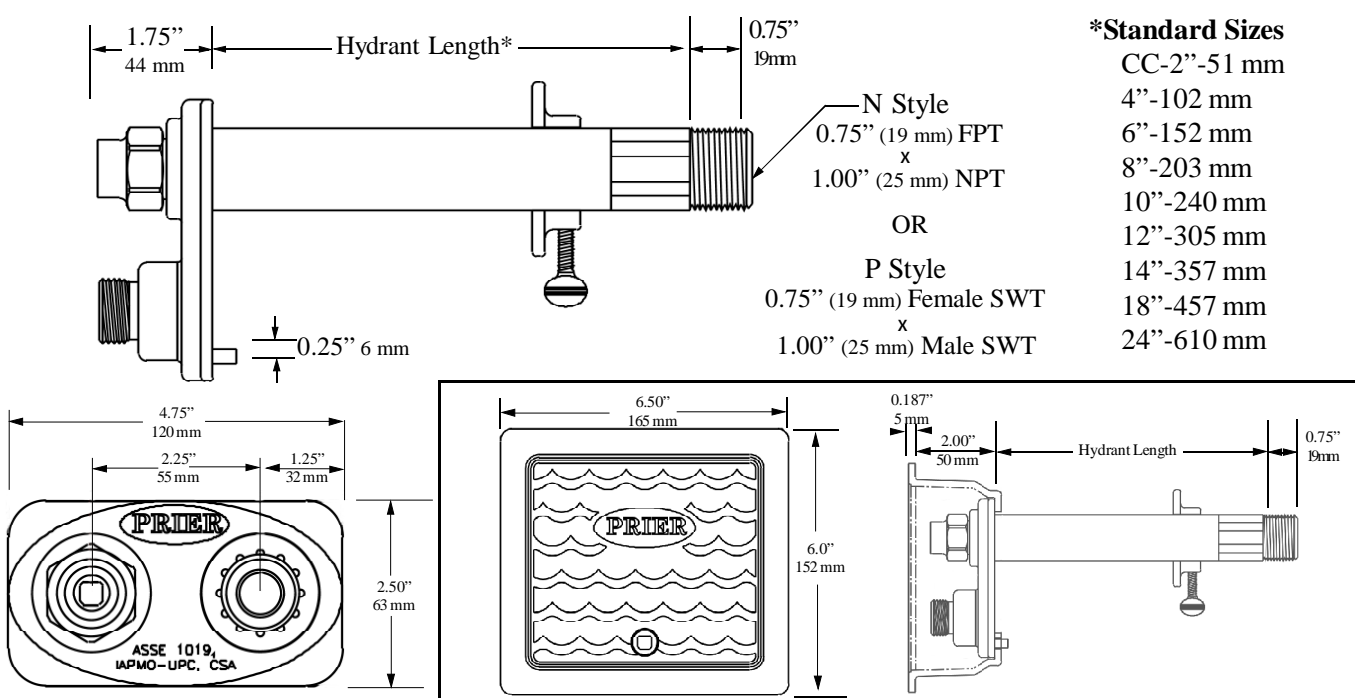
Box Finish
 1-Satin Nickel Plated
 2-Rough Brass



4515 East 139th Street
Grandview, MO 64030
800-362-9055
Fax 800-362-1463

C-634

Rough-In Dimensions



***Standard Sizes**

CC-2"	51 mm
4"	102 mm
6"	152 mm
8"	203 mm
10"	240 mm
12"	305 mm
14"	357 mm
18"	457 mm
24"	610 mm

N Style
0.75" (19 mm) FPT
x
1.00" (25 mm) NPT
OR
P Style
0.75" (19 mm) Female SWT
x
1.00" (25 mm) Male SWT

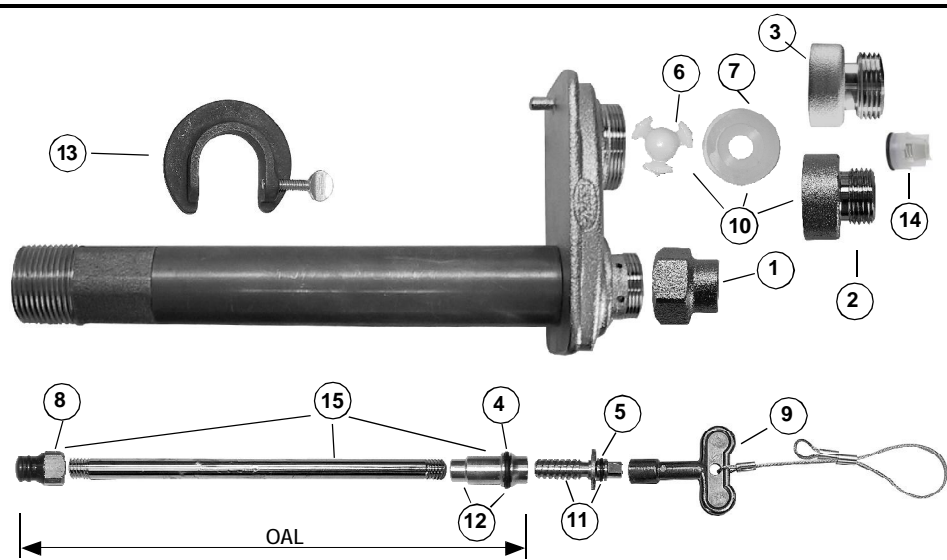
Specifications

Furnish and install Model C-634 Commercial key operated Wall Hydrant manufactured by Prier Products, Inc. Hydrant shall be surface mount and installed through 1 3/8" round opening. Hydrant shall have automatic draining capabilities with integral vacuum breaker/backflow preventor. Hydrant shall flow 15 Gallons per Minute minimum at 25 PSI Differential and be at full flow in 2 handle rotations. Hydrant shaft shall be brass with threaded and sealed connections. Hydrant shall have 3/4" or 1" (Choose one) hose connection with freezeless water flow and self-draining functions, one piece valve plunger, satin nickel finish, brass operating rod with positive triple seal shutoff mechanism. Hydrant shall be approved under ASSE 1019 or ASSE 1052 (Choose one) standard. Operating key & wall clamping ring to be furnished with each hydrant. Hydrant insertion length to be * inches.

Optional:
Furnish and install flush-mount hydrant box for each valve. Hydrant box shall be manufactured of solid cast brass with a Brass / Satin Nickel Plated Brass (Choose one) finish. Box may be installed separately and hydrant be insertable and removable from front of the box. Access to the hydrant box shall be provided by the same operating key as the valve.

* Close Coupled to 24" in 2" increments

Parts & Materials



ID	Part No	Description
1	300-6003	Valve Stem Cap-NP Brass
2	300-6004	3/4" Hose Piece-NP Brass
3	310-6009	1" Hose Piece-NP Brass
4	336-0001	O-Ring-Worm Sleeve
5	336-6001	O-Ring-Worm Drive
6	337-6001	Check Spider-Vacuum Breaker
7	346-6001	Diaphragm-Vacuum Breaker
8	399-6001	Stopper
9	C-108KT-808	Operating Key on lanyard
10	C-634KT-806	Vacuum Breaker Assy
11	C-634KT-809	Worm Drive Assy (with O-Ring)
12	C-634KT-808	Worm Sleeve with O-Ring
13	C-634WCR	Clamping Ring
14	399-0001	Secondary Check for ASSE 1052
	C-634KT-807	Overhaul Kit, 2,8,9,10,11,12
15	231-06CC	Stem for CC C-634 2 13/16" OAL
	231-0604	Stem for 4" new C-634 4 11/16" OAL
	231-0606	Stem for 6" new C-634 6 11/16" OAL
	231-0608	Stem for 8" new C-634 8 11/16" OAL
	231-0610	Stem for 10" new C-634 10 11/16" OAL
	231-0612	Stem for 12" new C-634 12 11/16" OAL
	231-0614	Stem for 14" new C-634 14 11/16" OAL
	231-0618	Stem for 18" new C-634 18 11/16" OAL
	231-0624	Stem for 24" new C-634 24 11/16" OAL