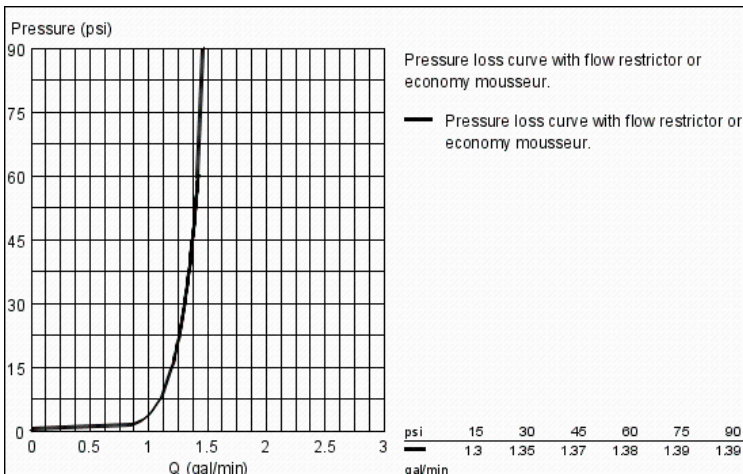
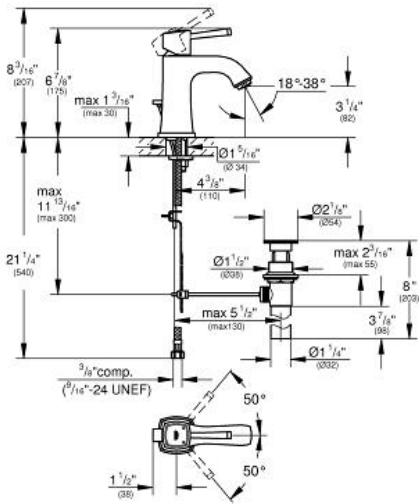


GRANDERA Lavatory Centerset M-Size

MODEL # 23311

GROHE America, Inc | 200 North Gary Avenue, Suite G, Roselle, IL 60172
Phone: +1 (800) 444-7643 | Fax: +1 (800) 225-2778 | us-customerservice@grohe.com

Pure Freude an Wasser



Product Description: Lavatory Centerset M-Size

Standard Specification:

- Single hole installation
- GROHE SilkMove 28 mm ceramic cartridge
- GROHE StarLight® finish
- GROHE EcoJoy® technology for less water and perfect flow
- GROHE AquaGuide® adjustable aerator 5.7 l/min
- 1 1/4" pop-up waste set
- Stainless steel flex lines
- Temperature limiter
- GROHE QuickFix® rapid installation system
- Max Flow Rate: 1.5 gpm (5.7 L/min)

Applicable Codes & Standards:

- Energy Policy Act of 1992
- NSF 61
- ASME A112.18.1/CSA B125.1
- US Federal and State material regulations
- EPA WaterSense®
- ICC/ANSI A117.1

Color:

- 23311 00A chrome
- 23311 000 chrome
- 23311 DA0 Warm Sunset
- 23311 EN0 brushed nickel
- 23311 ENA brushed nickel