

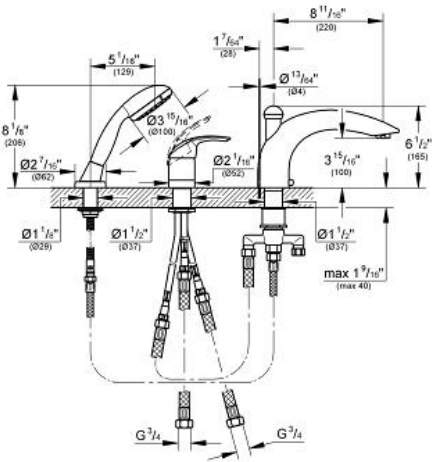
EUROSMART Three-Hole Single-Lever Bath Combination

MODEL # 32644

GROHE America, Inc | 200 North Gary Avenue, Suite G, Roselle, IL 60172
Phone: +1 (800) 444-7643 | Fax: +1 (800) 225-2778 | us-customerservice@grohe.com

Pure Freude an Wasser

GROHE



ADA

Product Description:
Three-Hole Single-Lever Bath Combination

Standard Specification:

- GROHE StarLight® finish
- OHM operating element
- Hand shower: New Tempesta 100, 2 sprays, 2.0 gpm (26 047 000)
- 8 1/2" Diverter tub spout
- Max Flow Rate 2.5 gpm (9.5 L/min) for Hand Shower, 6.3 gpm (23.8 L/min) for Spout

Applicable Codes & Standards:

- Energy Policy Act of 1992
- ASME A112.18.1/CSA B125.1
- ICC/ANSI A117.1

Color:

- 32644 001 chrome
- 32644 EN1 brushed nickel